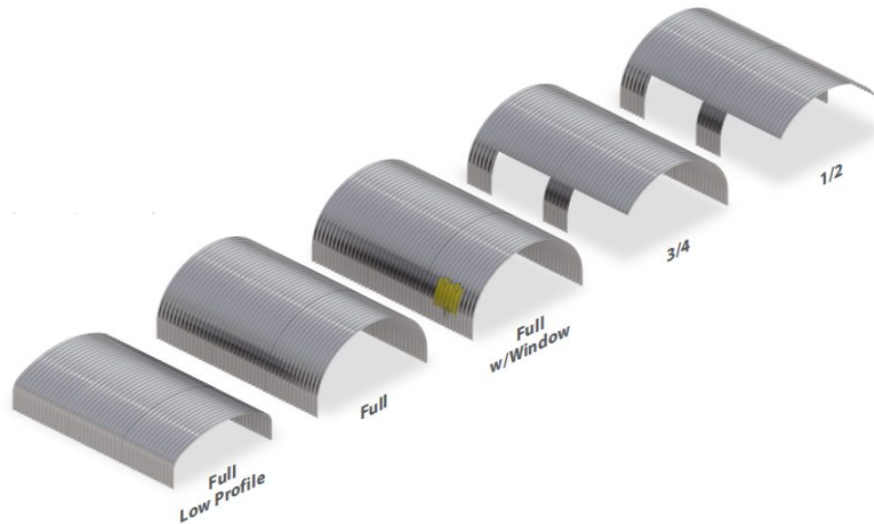




SKE Industries



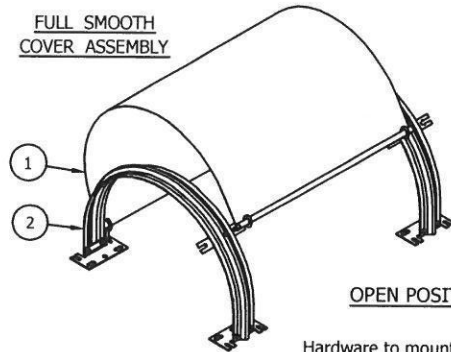
SKE Industries is a belt conveyor cover manufacturer and supplier in China. We can provide OEM services. You can get all types and standard conveyor covers from our company.

Contact Info:

Website: www.skecon.com

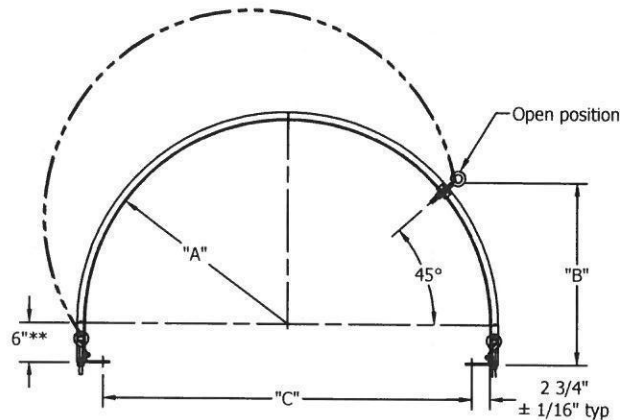
Email : info@skecon.com

FULL SMOOTH
COVER ASSEMBLY



OPEN POSITION

Hardware to mount foot brackets to conveyor is normally provided by other, but is available as an option.



SPECIFICATIONS					
ASSEMBLY NO.	BELT WIDTH	"A"	"B"	"C"	WT in LB
CH18GA40	18"	16-1/4"	19-1/4"	27"	52
CH20GA40	20"	17-1/4"	20"	29"	54
CH24GA40	24"	19-1/4"	21-7/8"	33"	58
CH30GA40	30"	22-1/4"	24"	39"	65
CH36GA40	36"	25-1/4"	26-1/8"	45"	71
CH42GA40	42"	28-1/4"	28-1/4"	51"	78
CH48GA40	48"	31-1/4"	30-3/8"	57"	84
CH54GA40	54"	34-1/4"	32-1/2"	63"	90
CH60GA40	60"	37-1/4"	34-5/8"	69"	97
CH72GA40	72"	43-1/4"	39"	81"	104
CH84GA40	84"	49-1/4"	43"	93"	118

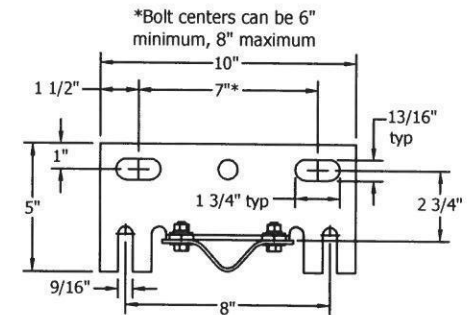
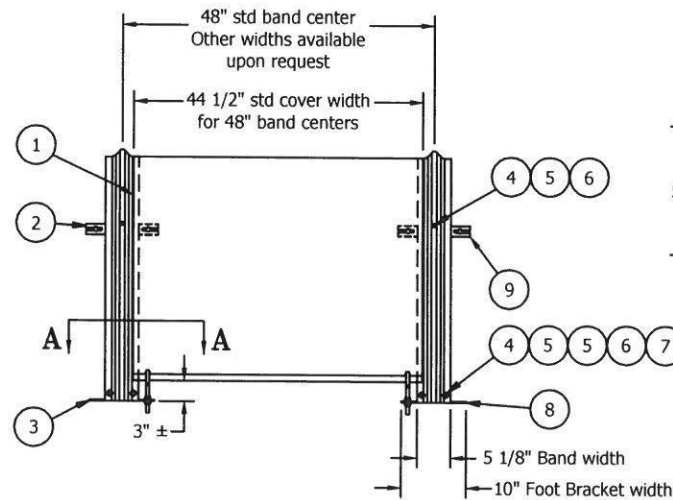
** 6" is standard tangent, other available upon request.

CH-SERIES FULL SMOOTH COVERS

(All Dimensions are standard. Other options for band spacing and cover sizes are available upon request)

Item	Part Number	Description	Per Cover	Per Band	Total Qty
1	CH_GC	Cover, Full Smooth, Galvanized G90, standard 22 ga			0
2	CH_GB	Support Band, Galv G90, std 12ga for BW<42", 10ga ≥ BW42"			0
3	12-6EBS-ZN	Eye bolt set, 1/2"-13 x 6", w/2 flanged hex nuts & 1 lock washer	4		0
4	516-1HHB-ZN	Bolt, hex head, 5/16"-18 x 1"		5	0
5	516FW-ZN	Washer, flat, 5/16"		9	0
6	516HN-ZN	Nut, hex, 5/16-18		5	0
7	516LW-ZN	Washer, lock, 5/16"		4	0
8	FB-G	Foot bracket/Base Bracket, 8 ga galvanized		2	0
9	RB-G	Retaining/Inspection bar, 7 ga galvanized		1	0

Note: All standard hardware is grade 2, zinc plated. Hot dipped galvanized and stainless steel are options.



Section A-A

Material:

Standard covers are 22 ga G90 galvanized steel. Bands are G90, 12 ga for belt widths up less than 42", 10 ga for belt widths 42" and up. Aluminum, Stainless Steel and Powder-coated are available.

DESIGN NOTE

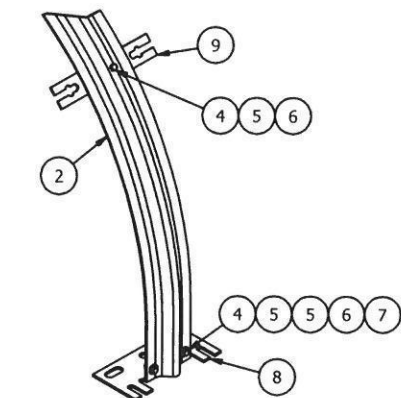
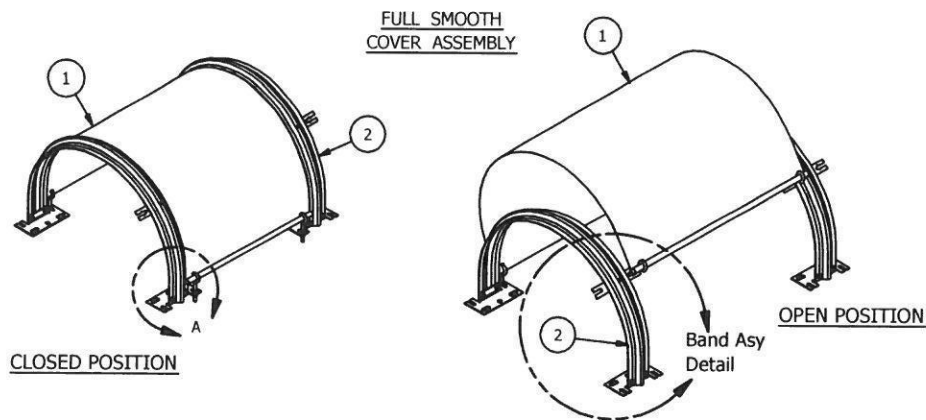
Standard CH180 Series Covers are designed for conveyor frames with outside dimensions of belt width +12". Eye bolts may hit conveyor structure when top chords are "T" or "W" structural shapes. This should be verified before ordering. Special brackets are available for these circumstances.

STANDARD INSTALLATION PROCEDURE

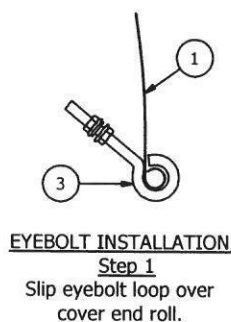
CH-SERIES FULL SMOOTH COVERS

Item	Part Number	Description	Per Cover	Per Band
1	CH_GC	Cover, Full Smooth, Galvanized G90, standard 22 ga		
2	CH_GB	Support Band, Galv G90, std 12ga for BW<42", 10ga ≥ BW42"		
3	12-6EBS-ZN	Eye bolt set, 1/2"-13 x 6", w/2 flanged hex nuts & 1 lock washer	4	
4	516-1HHB-ZN	Bolt, hex head, 5/16"-18 x 1"		5
5	516FW-ZN	Washer, flat, 5/16"		9
6	516HN-ZN	Nut, hex, 5/16-18		5
7	516LW-ZN	Washer, lock, 5/16"		4
8	FB-G	Foot bracket/Base Bracket, 8 ga galvanized		2
9	RB-G	Retaining/Inspection bar, 7 ga galvanized		1

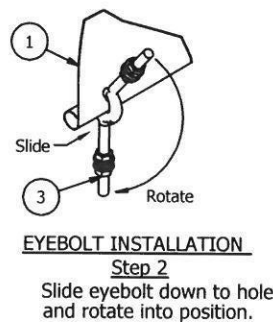
Note: All standard hardware is grade 2, zinc plated. Hot dipped galvanized and stainless steel are options.



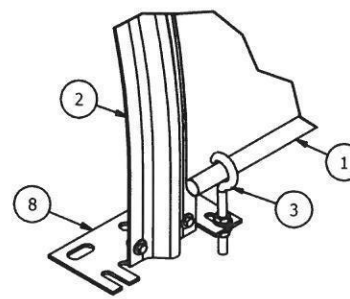
BAND ASSEMBLY
Cover not shown for clarity



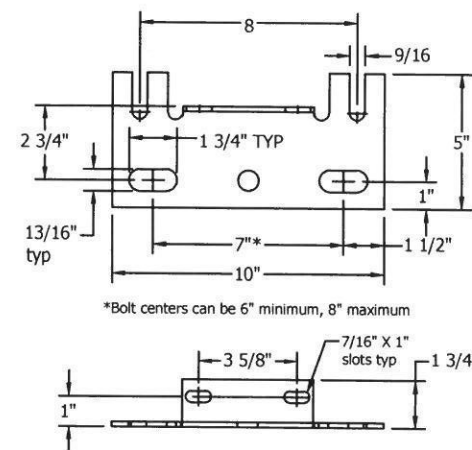
EYEBOLT INSTALLATION
Step 1
Slip eyebolt loop over cover end roll.



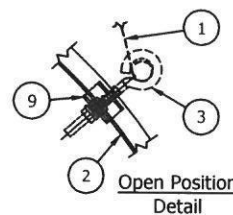
EYEBOLT INSTALLATION
Step 2
Slide eyebolt down to hole and rotate into position.



DETAIL A
COVER ATTACHMENT



FOOT BRACKET DETAIL
Material: 8ga galvanized steel



Note: To move covers to Open Position, loosen (do not remove) lower nuts of front eyebolts. Then prop the eyebolts into the retaining brackets.

INSTALLATION PROCEDURE

1. Bolt foot brackets [8] and retaining bar [9] to support band [2], using 5/16" hardware [4-7].
2. Locate support band on conveyor frame at desired spacing.
3. Drill 11/16" dia. holes on 7" centers in conveyor frame to match foot brackets. Foot bracket slots are 13/16" x 1-3/4" to allow for minor adjustments.
4. Bolt bands to conveyor with retaining bar on desired side. This 5/8" hardware is normally not furnished by but is available as an option.
5. Position cover [1] over support bands, and attach to foot brackets with 1/2" eyebolts [3]. See Eyebolt Installation Details and Cover Attachment Detail.
6. Make sure bands are perpendicular to conveyor support. Tighten all hardware.

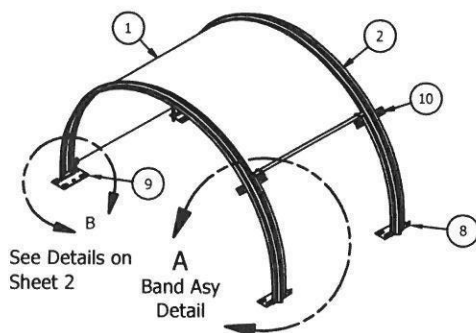
Note: It is the customer's (or customer's representative's) responsibility to check the compatibility between the cover opening and the conveyor idlers. RPS Engineering, Inc. can not be held responsible for errors that would lead to water on the belt or interference problems.

CH75-SERIES 3/4 SMOOTH COVERS

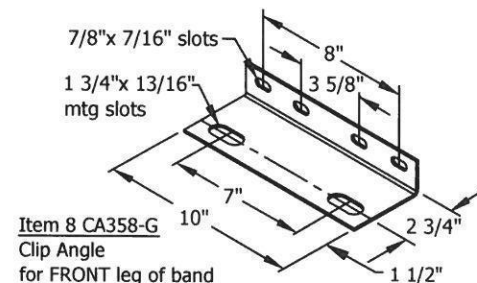
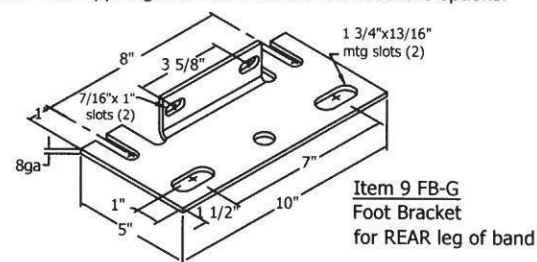
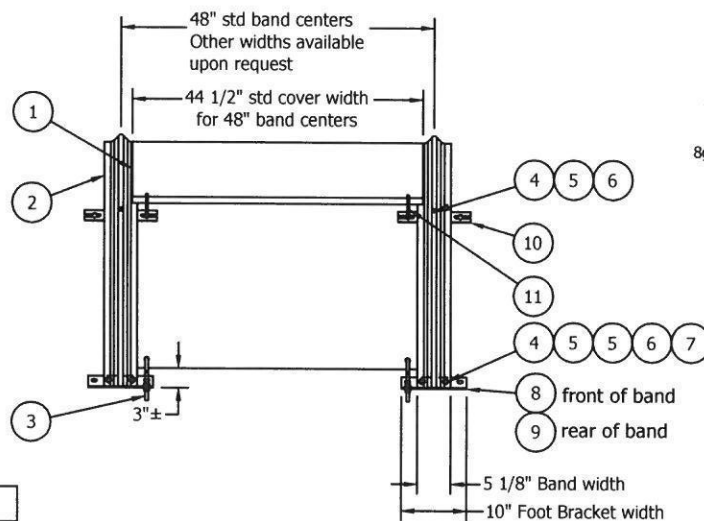
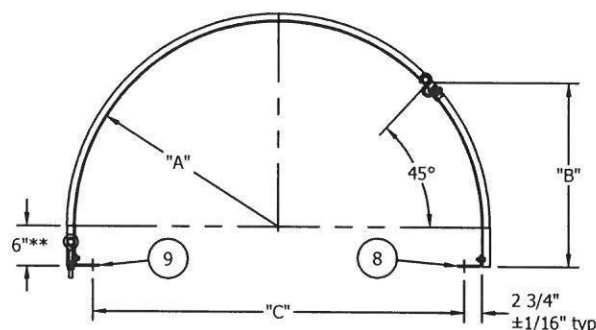
(All Dimensions are standard. Other options for band spacing, cover sizes are available upon request)

Item	Part Number	Description	Per Cover	Per Band	Total Qty
1	CH75_GC	Cover, Full Smooth, Galvanized G90, standard 22 ga			0
2	CH75_GB	Support Band, Galv G90, std 12ga for BW<42", 10ga ≥ BW42"			0
3	12-6EBS-ZN	Eye bolt set, 1/2"-13 x 6", w/2 flanged hex nuts & 1 lock washer	2		0
4	516-1HHB-ZN	Bolt, hex head, 5/16"-18 x 1"		5	0
5	516FW-ZN	Washer, flat, 5/16"		9	0
6	516HN-ZN	Nut, hex, 5/16-18		5	0
7	516LW-ZN	Washer, lock, 5/16"		4	0
8	CA358-G	Clip Angle, 7"mtg hole spcg, 8" & 3 5/8" band hole spcg, galv G90		1	0
9	FB-G	Foot Bracket/Base Bracket, galvanized		1	0
10	RB-G	Retaining/Inspection bar, 7 ga galvanized		1	0
11	SH-ZN	S-Hook, 3 1/4" overall length	2		0

Note: All standard hardware is grade 2, zinc plated. Hot dipped galvanized and stainless steel are options.



Hardware to mount foot brackets to conveyor is normally provided by other, but is available as an option.



SPECIFICATIONS

ASSEMBLY NO.	BELT WIDTH	"A"	"B"	"C"	WT in LB
CH7518GA40	18"	16-1/4"	19-1/4"	27"	45
CH7520GA40	20"	17-1/4"	20"	29"	48
CH7524GA40	24"	19-1/4"	21-7/8"	33"	50
CH7530GA40	30"	22-1/4"	24"	39"	54
CH7536GA40	36"	25-1/4"	26-1/8"	45"	61
CH7542GA40	42"	28-1/4"	28-1/4"	51"	67
CH7548GA40	48"	31-1/4"	30-3/8"	57"	72
CH7554GA40	54"	34-1/4"	32-1/2"	63"	77
CH7560GA40	60"	37-1/4"	34-5/8"	69"	83
CH7572GA40	72"	43-1/4"	39"	81"	93
CH7584GA40	84"	49-1/4"	43"	93"	104

** 6" is standard tangent, other available upon request.

Material:

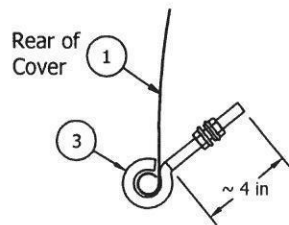
Standard covers are 22 ga G90 galvanized steel. Bands are G90, 12 ga for belt widths up less than 42", 10 ga for belt widths 42" and up. Aluminum, Stainless Steel and Powder-coated are available.

DESIGN NOTE

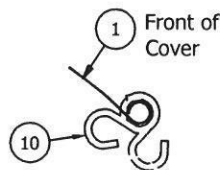
Standard CH75 Series Covers are designed for conveyor frames with outside dimensions of belt width +12". Eye bolts may hit conveyor structure when top chords are "T" or "W" structural shapes. This should be verified before ordering. Special brackets are available for the rear leg of the bands for these circumstances.

STANDARD INSTALLATION PROCEDURE

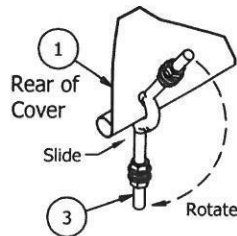
CH75-SERIES 3/4 SMOOTH COVERS



Rear of Cover



Front of Cover



Rear of Cover

Slide

Rotate

EYEBOLT / S-HOOK INSTALLATION

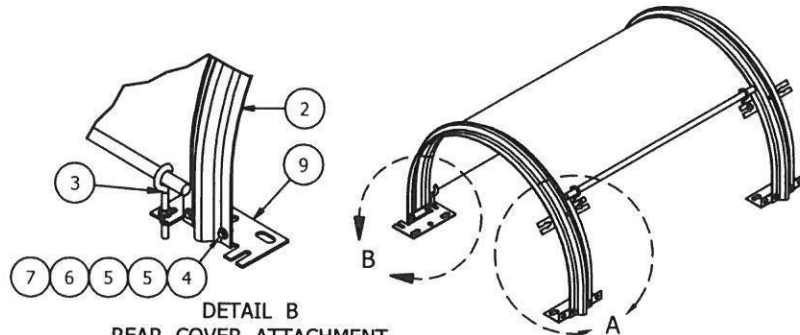
Step 1

Slip eyebolt or S-hook loop over cover end roll.

EYEBOLT / S-HOOK INSTALLATION

Step 2

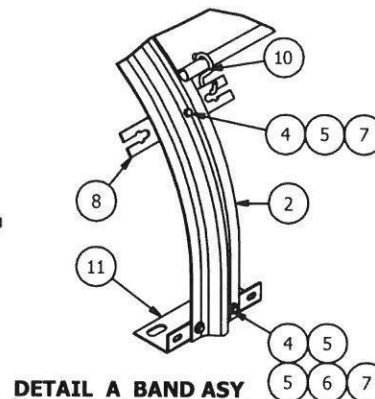
Slide eyebolt or S-hook down to hole & rotate into position.



DETAIL B

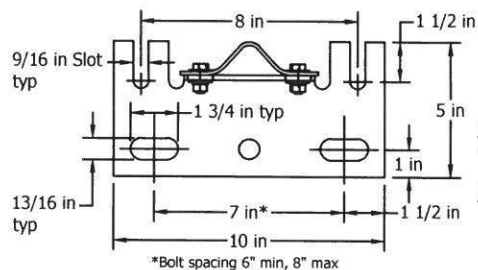
REAR COVER ATTACHMENT

Shown from rear for clarity



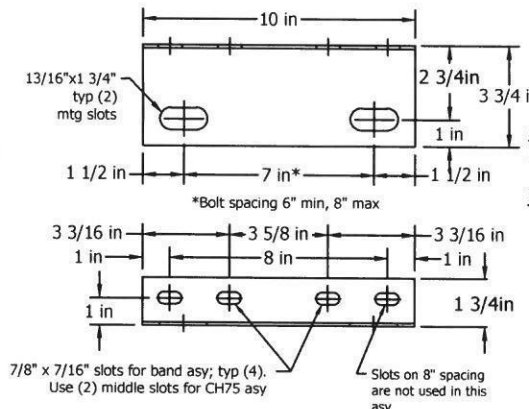
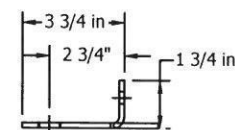
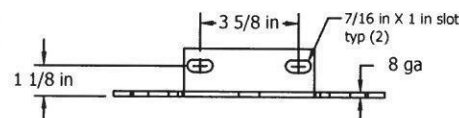
DETAIL A BAND ASY

FRONT COVER ATTACHMENT



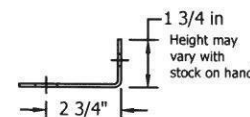
FOOT BRACKET FB-G
Material: 8 ga Galv Steel G90

FOR REAR OF BAND ONLY



CLIP ANGLE CA358
Material: 10 ga Galv Steel G90

FOR FRONT OF BAND ONLY

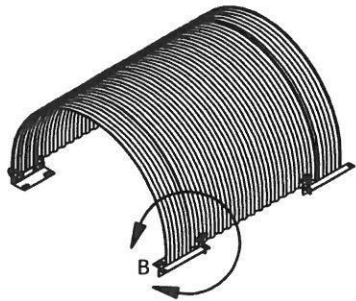


Item	Part Number	Description	Per Cover	Per Band
1	CH75_GC	Cover, Full Smooth, Galvanized G90, standard 22 ga		
2	CH75_GB	Support Band, Galv G90, std 12ga for BW<42", 10ga ≥ BW42"		
3	12-6EBS-ZN	Eye bolt set, 1/2"-13 x 6", w/2 flanged hex nuts & 1 lock washer	2	
4	516-1HHB-ZN	Bolt, hex head, 5/16"-18 x 1"		5
5	516FW-ZN	Washer, flat, 5/16"		9
6	516HN-ZN	Nut, hex, 5/16-18		5
7	516LW-ZN	Washer, lock, 5/16"		4
8	CA358-G	Clip Angle, 7"mtg hole spcg, 8"& 3 5/8" band hole spcg, galv G90		1
9	FB-G	Foot Bracket/Base Bracket, galvanized		1
10	RB-G	Retaining/Inspection bar, 7 ga galvanized		1
11	SH-ZN	S-Hook, 3 1/4" overall length	2	

Note: All standard hardware is grade 2, zinc plated. Hot dipped galvanized and stainless steel are options.

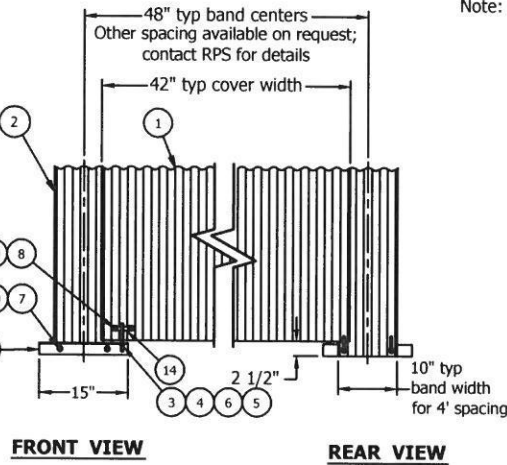
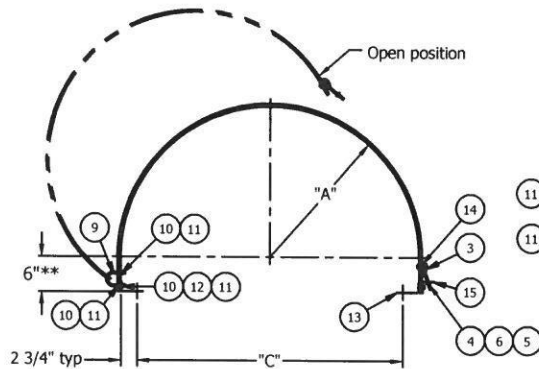
INSTALLATION PROCEDURE

1. Bolt foot brackets [9] in rear of support band [2]. Bolt clip angles [11] & retaining bar [8] in front of band, using 5/16" hardware [4-7].
2. Locate support band on conveyor frame at desired spacing.
3. Drill 11/16" dia. holes in conveyor frame to match foot brackets.
4. Bolt bands to conveyor with retaining bar on desired side. This 5/8" hardware is normally **not** furnished by
5. Position cover [1] over support bands, and attach to foot brackets with 1/2" eyebolts [3] in the rear and S-hooks [10] in front. See Eyebolt / S-hook Installation Details and Cover Attachment Detail.
6. Make sure bands are perpendicular to conveyor. Tighten all hardware.



Hardware to mount clip angles to conveyor provided by other.

For Details & Installation Procedure see Standards on Sheet 2

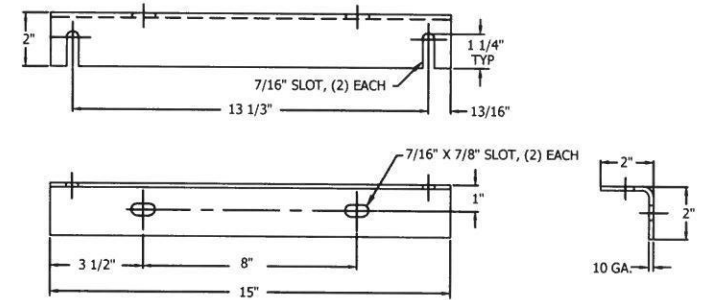


CHCO-SERIES CORRUGATED FULL QUICK-OPENING COVERS

(All Dimensions are standard. Other options for band spacing and cover sizes are available upon request)

Item	Part#	Description	Per Cover	Per Band
1	CHCO_GC42	Cover, Quick-Opening, Corrugated 2 2/3" x 1/2", Galvanized Steel G90		
2	CHCO_GB10	Support Band, Corrugated 2 2/3" x 1/2", Galv G90		
3	38-5EB-ZN	Eyebolt, 3/8-16 x 5"	2	0
4	38FW-ZN	Flat Washer, 3/8"	2	0
5	38HN-ZN	Hex Nut, 3/8-16	2	0
6	38LW-ZN	Lock Washer, 3/8"	2	0
7	516-112HHB-ZN	Bolt, Hex Head, 5/16-18 x 1 1/2"	0	2
8	516-1HHB-ZN	Bolt, Hex Head, 5/16-18 x 1"	4	0
9	516-214UB-ZN	U-Bolt, 5/16 x 18, 2 1/4"	2	0
10	516FW-ZN	Flat Washer, 5/16"	14	4
11	516HN-ZN	Hex Nut, 5/16-18	10	2
12	516LW-ZN	Lock Washer, 5/16"	6	2
13	CA7-G	Clip Angle, 7" Mtg slot spacing, 8" band slot spacing, galv	0	2
14	FLP-ZN	Latch Plate, Flat, 3/4" x 3 3/4"	2	0
15	LA15-G	Locking Angle, 15" long for 10" corrugated bands, galvanized	0	1

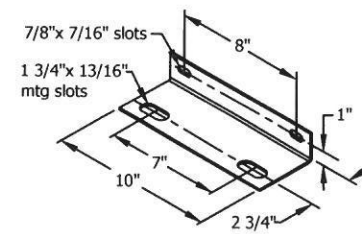
Note: All standard hardware is grade 2, zinc plated. Hot dipped galvanized and stainless steel are options.



LA15-G STANDARD LOCKING ANGLE FOR CHCO 10" BANDS FOR FULL COVERS

SPECIFICATIONS				
ASSEMBLY NO.	BELT WIDTH	"A"	"C"	WT in LB
CHCO18GA40	18"	16-1/4"	27"	51
CHCO20GA40	20"	17-1/4"	29"	54
CHCO24GA40	24"	19-1/4"	33"	58
CHCO30GA40	30"	22-1/4"	39"	64
CHCO36GA40	36"	25-1/4"	45"	70
CHCO42GA40	42"	28-1/4"	51"	76
CHCO48GA40	48"	31-1/4"	57"	82
CHCO54GA40	54"	34-1/4"	63"	88
CHCO60GA40	60"	37-1/4"	69"	95
CHCO72GA40	72"	43-1/4"	81"	107
CHCO84GA40	84"	49-1/4"	93"	119

Material:
Standard covers and bands are 20 ga G90 galvanized steel.
Aluminum, Stainless Steel and Powder-coated are available.



STANDARD CA7-G

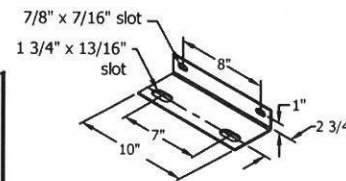
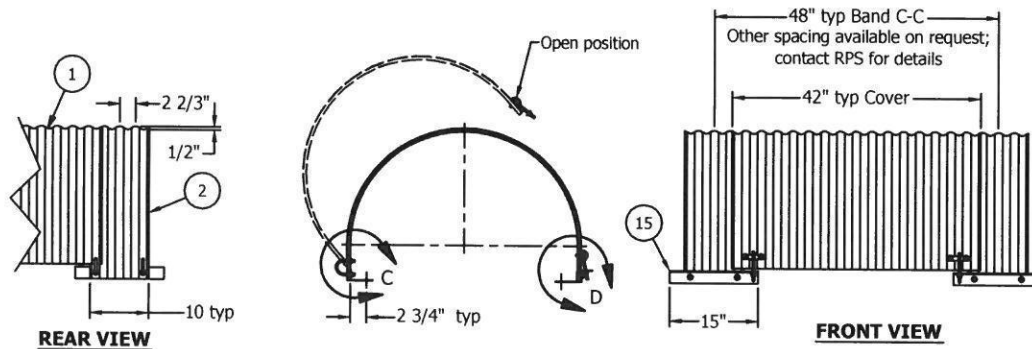
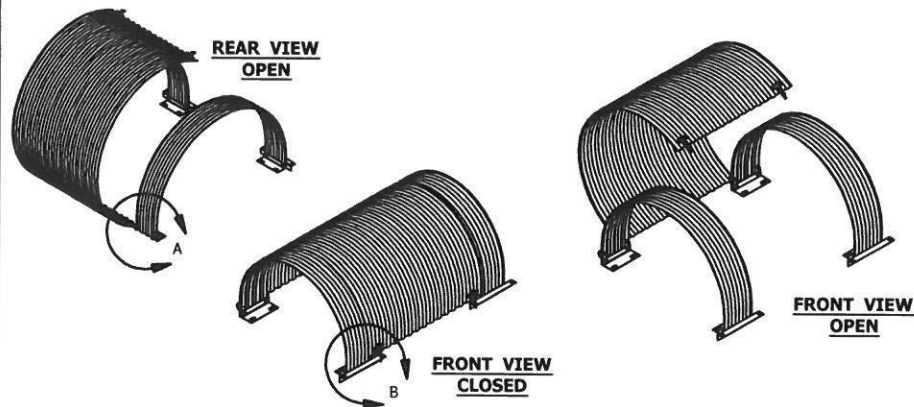
** 6" is standard tangent, other available upon request.

STANDARD INSTALLATION PROCEDURE

CHCO-SERIES CORRUGATED FULL QUICK-OPENING COVERS

Item	Part#	Description	Per Cover	Per Band
1	CHCO_GC42	Cover, Quick-Opening, Corrugated 2 2/3" x 1/2", Galvanized Steel G90		
2	CHCO_GB10	Support Band, Corrugated 2 2/3" x 1/2", Galv G90		
3	38-5EB-ZN	Eyebolt, 3/8-16 x 5"	2	0
4	38FW-ZN	Flat Washer, 3/8"	2	0
5	38HN-ZN	Hex Nut, 3/8-16	2	0
6	38LW-ZN	Lock Washer, 3/8"	2	0
7	516-112HMB-ZN	Bolt, Hex Head, 5/16-18 x 1 1/2"	0	2
8	516-1HMB-ZN	Bolt, Hex Head, 5/16-18 x 1"	4	0
9	516-214UB-ZN	U-Bolt, 5/16 x 18, 2 1/4"	2	0
10	516FW-ZN	Flat Washer, 5/16"	14	4
11	516HN-ZN	Hex Nut, 5/16-18	10	2
12	516LW-ZN	Lock Washer, 5/16"	6	2
13	CA7-G	Clip Angle, 7" Mtg slot spacing, 8" & 3 5/8" vertical leg slot spacing, galv	0	2
14	FLP-ZN	Latch Plate, Flat, 3/4" x 3 3/4"	2	0
15	LA15-G	Locking Angle, 15" long for 10" corrugated bands, galvanized	0	1

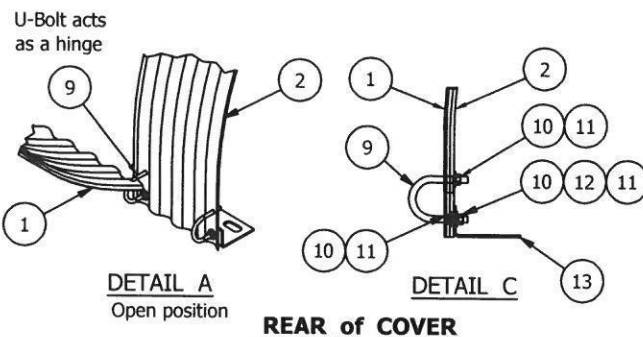
Note: All standard hardware is grade 2, zinc plated. Hot dipped galvanized and stainless steel are options.



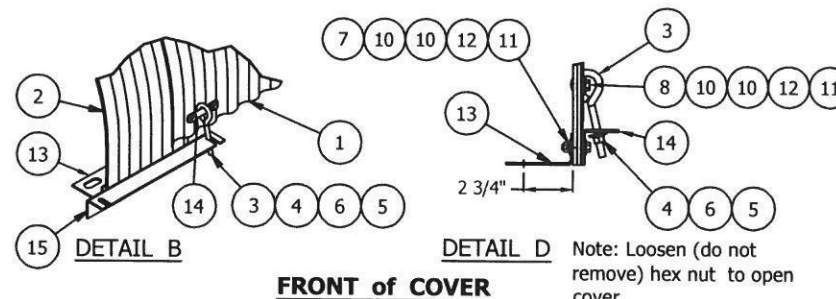
STANDARD CA7-G
CLIP ANGLE

INSTALLATION PROCEDURE

1. Bolt clip angles [13] to conveyor with 5/8" fasteners, which are normally not provided by.
2. Fasten support band [2] and locking angle [15] on opening side ("front") to clip angles with 5/16" hardware [7 & 10-12].
3. Insert flat latch plate [14] thru eyebolt [3] and attach latch plate to cover with 5/16" hardware [8 & 10-12].
4. Position cover [1] over support bands, and connect cover to rear side of bands with 5/16" U-bolts [9]. See Hinge Details A & C.
5. Secure front side of cover with 3/8" eyebolts [3-6]. See Latch Details B & D.
6. Be sure bands are perpendicular to conveyor support and that cover fits in band corrugations. Tighten all fasteners.



REAR of COVER



FRONT of COVER

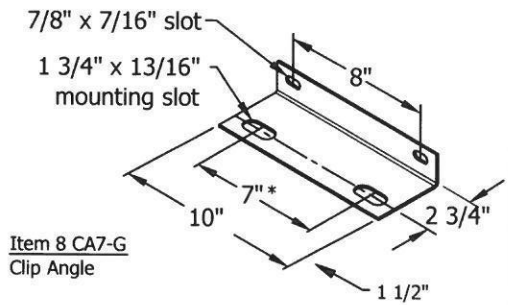
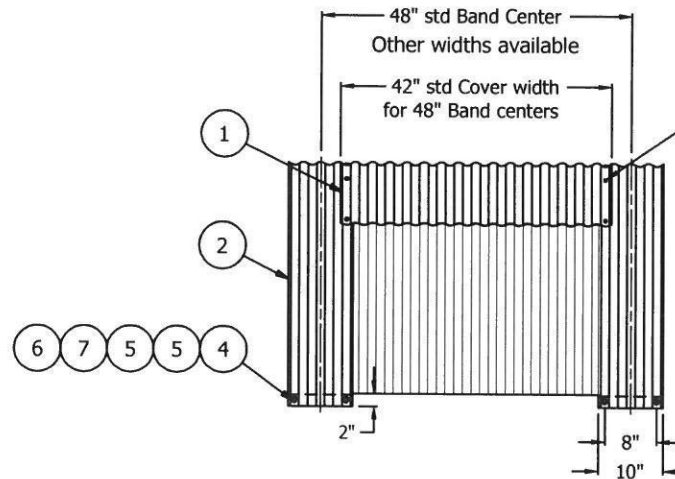
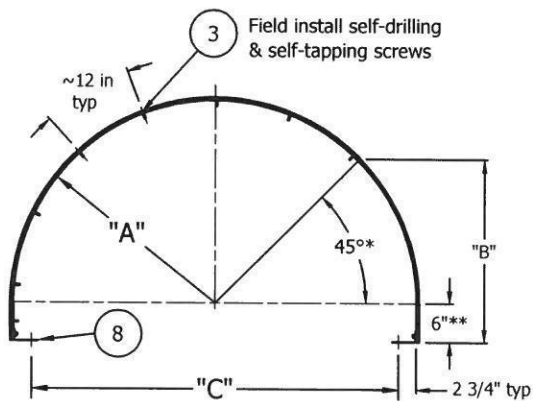
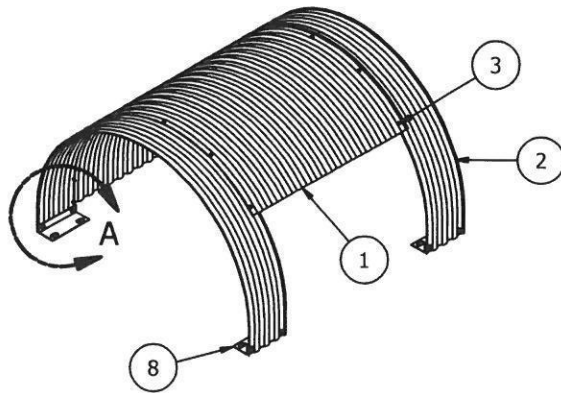
Note: Loosen (do not remove) hex nut to open cover

CHCS75 SERIES 3/4 CORRUGATED STATIONARY COVERS

(All Dimensions are standard. Other options for band spacing, cover length are available upon request)

Item	Part #	Description	Per Cover	Per Band
1	CHCS_GC42	Cover, 3/4 corrugated 2 2/3" x 1/2", stationary, galv G90	0	
2	CHC_GB10	Support band, corrugated 2 2/3" x 1/2", galv G90		0
3	14-78LS/W-ZN	Lap screw with washer, 1/4" x 7/8"	varies	
4	516-1HHB-ZN	Bolt, hex head, 5/16"-18 x 1"		4
5	516FW-ZN	Washer, flat, 5/16"		8
6	516HN-ZN	Nut, hex, 5/16-18		4
7	516LW-ZN	Washer, lock, 5/16"		4
8	CA7-G	Clip angle, 7" mtg hole spacing, 8" band hole spacing, galvanized		2

Note: All standard hardware is grade 2, zinc plated. Hot dipped galvanized and stainless steel are options.



CLIP ANGLE DETAIL

* Bolt centers can be 6" minimum, 8" maximum

SPECIFICATIONS

ASSEMBLY NO.	BELT WIDTH	"A"	"B"	"C"	WT / ASY
CHCS7518GA40	18"	16-1/4"	19-1/4"	27"	37 lbs
CHCS7520GA40	20"	17-1/4"	20"	29"	39 lbs
CHCS7524GA40	24"	19-1/4"	21-7/8"	33"	43 lbs
CHCS7530GA40	30"	22-1/4"	24"	39"	49 lbs
CHCS7536GA40	36"	25-1/4"	26-1/8"	45"	52 lbs
CHCS7542GA40	42"	28-1/4"	28-1/4"	51"	57 lbs
CHCS7548GA40	48"	31-1/4"	30-3/8"	57"	62 lbs
CHCS7554GA40	54"	34-1/4"	32-1/2"	63"	67 lbs
CHCS7560GA40	60"	37-1/4"	34-5/8"	69"	72 lbs
CHCS7572GA40	72"	43-1/4"	39"	81"	82 lbs
CHCS7584GA40	84"	49-1/4"	43"	93"	91 lbs

* 45° is standard opening; other available upon request.

** 6" is standard tangent; other available upon request.

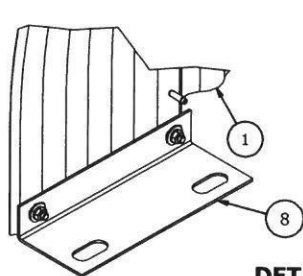
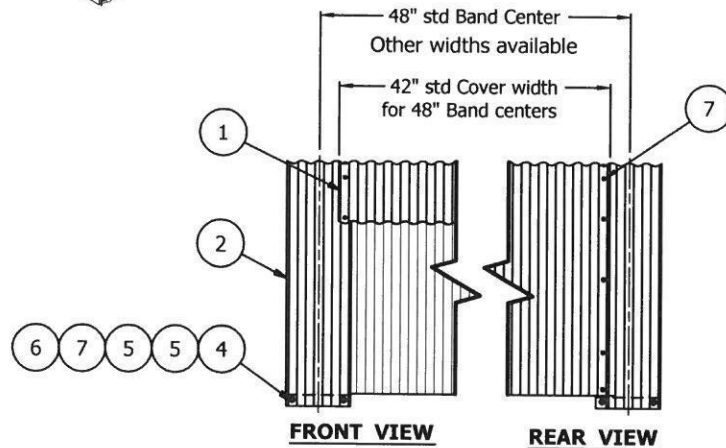
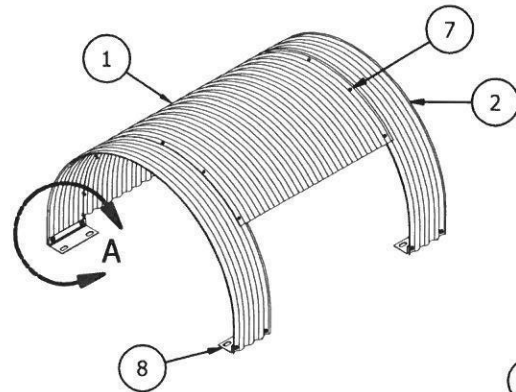
Material:

Standard covers and bands are 20 ga G90 galvanized steel.

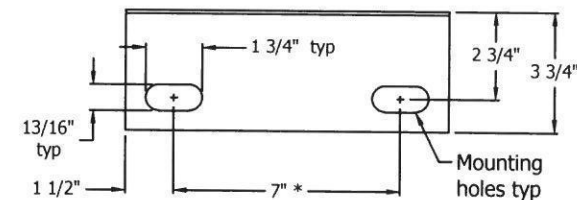
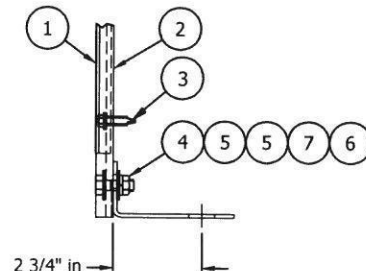
Aluminum, Stainless Steel and Powder-coated are available.

STANDARD INSTALLATION PROCEDURE

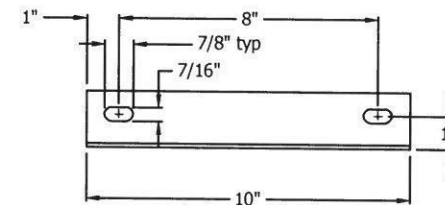
CHCS75 SERIES 3/4 CORRUGATED STATIONARY COVERS



DETAIL A

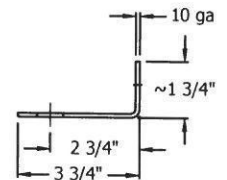


* Bolt centers can be 6" minimum, 8" maximum



CLIP ANGLE (Item 8)

Material: 10 ga galvanized steel

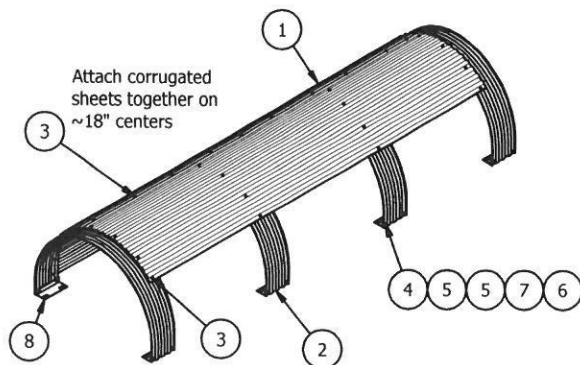


Item	Part #	Description	Per Cover	Per Band
1	CHCS_GC42	Cover, 3/4 corrugated 2 2/3" x 1/2", stationary, galv G90	0	
2	CHC_GB10	Support band, corrugated 2 2/3" x 1/2", galv G90		0
3	14-78LS/W-ZN	Lap screw with washer, 1/4" x 7/8"	varies	
4	516-1HHB-ZN	Bolt, hex head, 5/16"-18 x 1"		4
5	516FW-ZN	Washer, flat, 5/16"		8
6	516HN-ZN	Nut, hex, 5/16-18		4
7	516LW-ZN	Washer, lock, 5/16"		4
8	CA7-G	Clip angle, 7" mtg hole spacing, 8" upright hole spacing, galvanized		2

Note: All standard hardware is grade 2, zinc plated. Hot dipped galvanized and stainless steel are options.

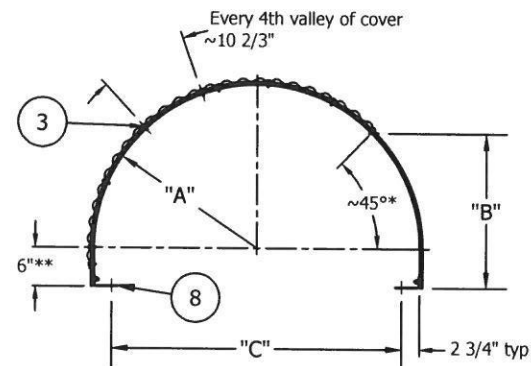
INSTALLATION PROCEDURE

1. Drill 11/16" dia. holes in conveyor support to match clip angles [8] and desired support band spacing.
2. Bolt clip angles to bands [2] using 5/16" hardware [4-7]. See Detail A.
3. Locate bands on conveyor and attach with 5/8" fasteners. Normally this hardware not furnished by Bands must be perpendicular to conveyor support.
4. Position covers [1] on bands and attach with lap screws [3] on ~12" spacing.



Hardware to mount clip angles to conveyor provided by others.

For Details and Installation Procedure, see Standards on CHLC75 p. 2



SPECIFICATIONS

ASSEMBLY NO.	BELT WIDTH	"A"	"B"	"C"	WT / LF
CHLC7518GA40	18"	16-1/4"	19-1/4"	27"	8.60 lbs
CHLC7520GA40	20"	17-1/4"	20"	29"	9.17 lbs
CHLC7524GA40	24"	19-1/4"	21-7/8"	33"	10.00 lbs
CHLC7530GA40	30"	22-1/4"	24"	39"	11.08 lbs
CHLC7536GA40	36"	25-1/4"	26-1/8"	45"	12.42 lbs
CHLC7542GA40	42"	28-1/4"	28-1/4"	51"	13.58 lbs
CHLC7548GA40	48"	31-1/4"	30-3/8"	57"	14.67 lbs
CHLC7554GA40	54"	34-1/4"	32-1/2"	63"	15.83 lbs
CHLC7560GA40	60"	37-1/4"	34-5/8"	69"	19.88 lbs
CHLC7572GA40	72"	43-1/4"	39"	81"	21.08 lbs
CHLC7584GA40	84"	49-1/4"	43"	93"	23.75 lbs

* 45° is std opening; other available upon request.

** 6" is std tangent; other available upon request.

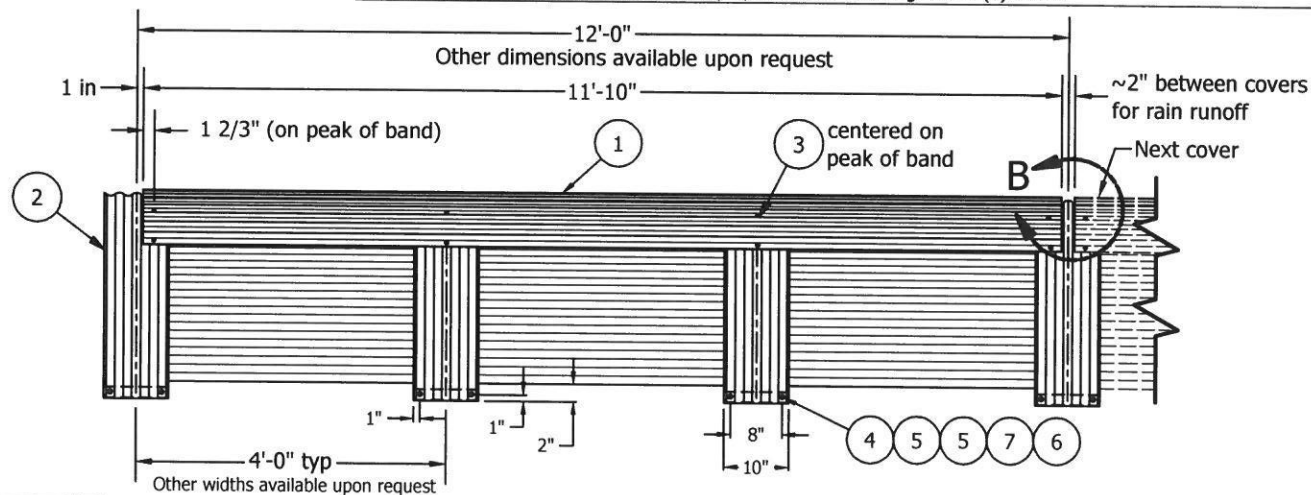
CHLC75 SERIES 3/4 CORR'D LONGITUDINAL FIXED COVERS

(All Dimensions are standard. Other options for band spacing, cover length are available upon request)

Item	Part No.	Description	Per Cover	Per Band
1	CHLC75_GC40120	Cover Asy [^] , 3/4 corr'd longitudinally, stationary, Galv G90		
2	CHC36GB10	Support band, corrugated 2 2/3" x 1/2", Galv G90		
3	14-78LS/W-ZN	Lap screw** with washer, 1/4" x 7/8", zinc plate	varies	varies
4	516-1HHB-ZN	Bolt, hex head, 5/16"-18 x 1", zinc plate		4
5	516FW-ZN	Flat washer, 5/16", zinc plate		8
6	516HN-ZN	Nut, hex, 5/16-18, zinc plate		4
7	516LW-ZN	Lock washer, 5/16", zinc plate		4
8	CA7-G	Clip Angle, 7" Mtg slot spacing, 8" vertical leg slot spcg, galv		2

[^] Cover Assemblies typically consist of more than one corrugated sheet

Note: Every 3rd band needs twice as many lap screws for fastening ends of (2) covers



Material:

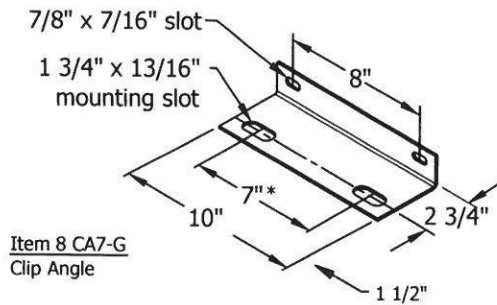
Standard covers are 24 ga G90 galvanized steel, corrugated 1/2"x 2.67".

Standard bands are 20 ga G90 galvanized steel, corrugated 1/2"x 2.67".

Aluminum, Stainless Steel and Powder-coated are available.

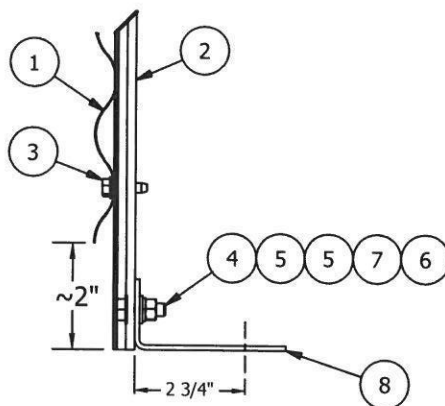
STANDARD INSTALLATION PROCEDURE

CHLC75 SERIES 3/4 CORR'D LONGITUDINAL FIXED COVERS

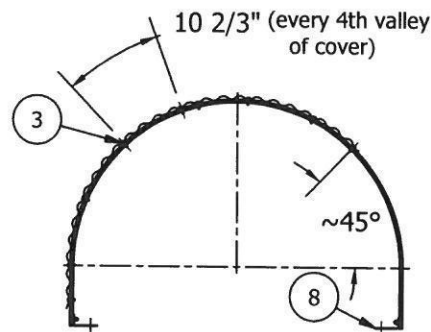


CLIP ANGLE DETAIL

* Bolt centers can be 6" minimum, 8" maximum

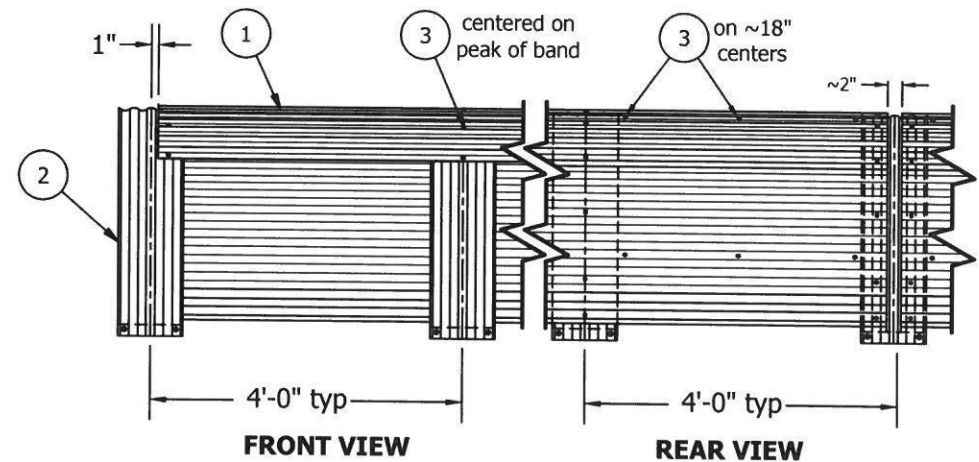


DETAIL C



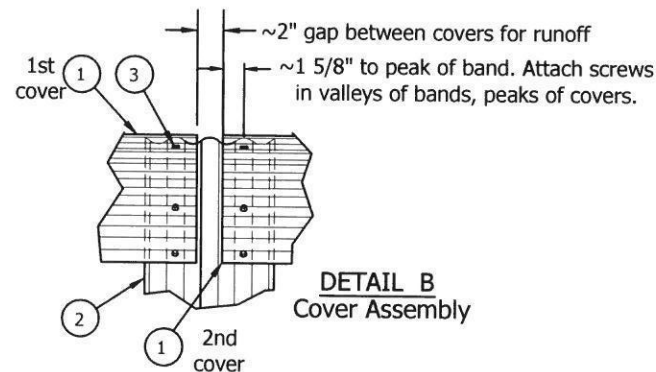
Item	Part No.	Description	Per Cover	Per Band
1	CHLC75_GC40120	Cover Assy*, 3/4 corr'd longitudinally, stationary, Galv G90		
2	CHC36GB10	Support band, corrugated 2 2/3" x 1/2", Galv G90		
3	14-78LS/W-ZN	Lap screw** with washer, 1/4" x 7/8", zinc plate	varies	varies
4	516-1HHB-ZN	Bolt, hex head, 5/16"-18 x 1", zinc plate		4
5	516FW-ZN	Flat washer, 5/16", zinc plate		8
6	516HN-ZN	Nut, hex, 5/16-18, zinc plate		4
7	516LW-ZN	Lock washer, 5/16", zinc plate		4
8	CA7-G	Clip Angle, 7" Mtg slot spacing, 8" vertical leg slot spcg, galv		2

^Cover Assemblies typically consist of more than one corrugated sheet, attached together with lap screws on ~18" centers
Note: End bands need twice as many lap screws for fastening (2) covers



INSTALLATION PROCEDURE

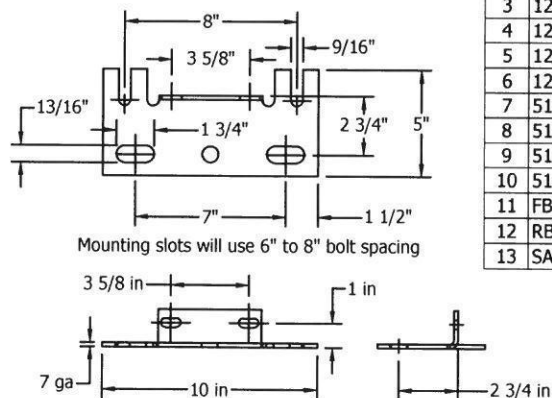
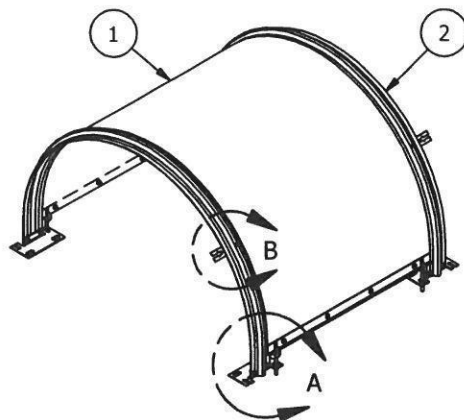
1. Bolt clip angles [8] to support bands [2] using 5/16" hardware [4-7].
2. Locate support bands on conveyor and attach with hardware that is normally provided by other. Bands must be perpendicular to conveyor support.
3. Lap covers [1] one corrugation at adjoining edges using [3] to attach. See Detail A. Attach covers to bands with more lap screws [3] on approx. 10 2/3" spacing (1 lap screw every 4 corrugations.) See Detail B.
4. Secure side laps with lap screws on approximate 18" spacing.



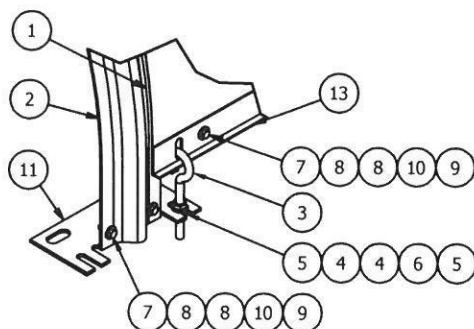
STANDARD INSTALLATION PROCEDURE

CHFG-SERIES FULL SMOOTH FIBERGLASS COVERS

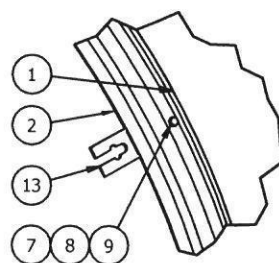
Item	Part Number	Description	Per Cover	Per Band
1	CHFG*C40	Cover, Full Smooth, .090" Fiberglass, White	1	
2	CHFG*B	Support Band, Type 304 Stainless Steel		1
3	12-6EB-304SS	Eye bolt, 1/2"-13 x 6" 304 SS	4	
4	12FW-304SS	Flat washers, 1/2" 304 SS	8	
5	12HN-304SS	Hex nut, 1/2"-13, 304 SS	8	
6	12LW-304SS	Lock washer, 1/2", 304 SS	4	
7	516-1HHB-304SS	Bolt, hex head, 5/16"-18 x 1", 304 Stainless Steel	8	5
8	516FW-304SS	Washer, flat, 5/16", 304 Stainless Steel	16	9
9	516HN-304SS	Nut, hex, 5/16"-18, 304 Stainless Steel	8	5
10	516LW-304SS	Washer, lock, 5/16", 304 Stainless Steel	8	5
11	FB-304SS	Foot bracket/Base Bracket, 304 Stainless Steel		2
12	RB-304SS	Retaining/Inspection bar, 304 Stainless Steel		1
13	SA4412-304SS	Stiffening Angle, 1"x 2" x Cover Width (44 1/2"), 12ga 304SS	2	



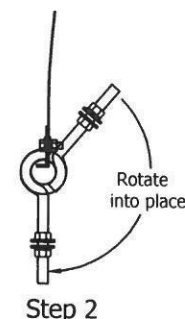
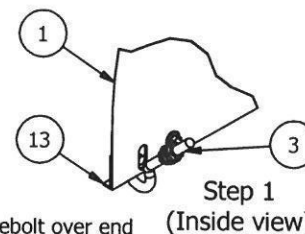
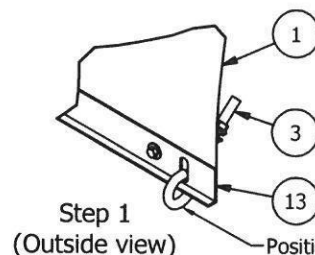
Foot Bracket
Material: 304 Stainless Steel



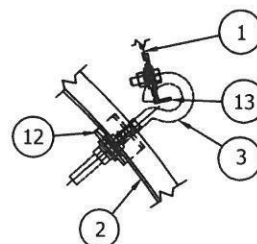
DETAIL A



DETAIL B



EYEBOLT INSTALLATION DETAIL

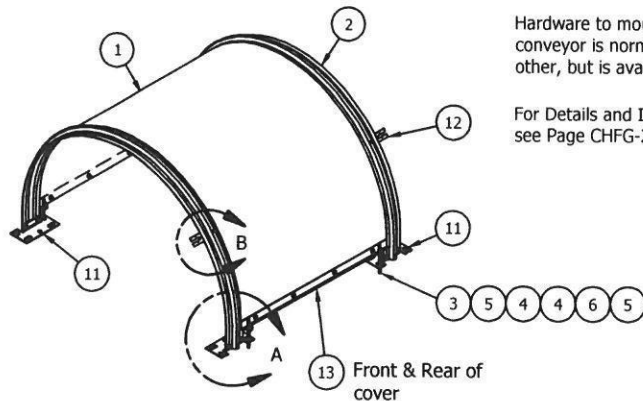


OPEN POSITION DETAIL "C"

Note: To move covers to Open Position, loosen (do not remove) lower nuts of front eyebolts. Then prop the eyebolts into the retaining brackets. See Open Position Detail.

INSTALLATION PROCEDURE

1. Bolt foot brackets [11] and retaining bar [12] to support band [2] using 5/16" hardware [7-10]. See Details A & B.
2. Locate bands on conveyor at desired spacing. Drill 11/16" holes in conveyor to match base brackets.
3. Bolt bands to conveyor with retaining bar on desired side. Bands must be perpendicular to conveyor support. Hardware for mounting bands and brackets to conveyor frame is normally not provided by
4. Fasten stiffening angles [13] to edges of covers [1] with 5/16" hardware [7-10].
5. Position cover over support bands and attach front and rear of covers to base brackets with 1/2" eyebolts [3-6]. See Eyebolt Installation Detail and Detail A.



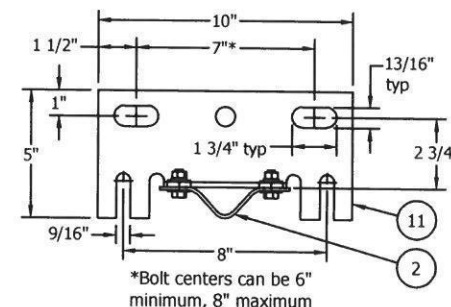
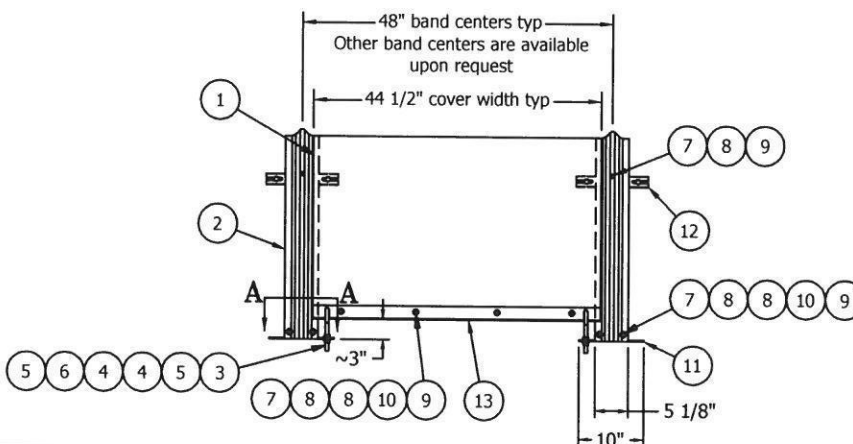
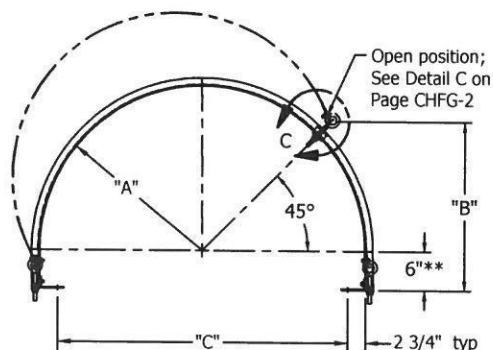
Hardware to mount foot brackets to conveyor is normally provided by other, but is available as an option.

For Details and Installation Procedure, see Page CHFG-2

CHFG-SERIES FULL SMOOTH FIBERGLASS COVERS

(All Dimensions are standard. Other options for band spacing and cover sizes are available upon request)

Item	Part Number	Description	Per Cover	Per Band
1	CHFG**C40	Cover, Full Smooth, .090" Fiberglass, White	1	
2	CHFG**B	Support Band, Type 304 Stainless Steel		1
3	12-6EB-304SS	Eye bolt, 1/2"-13 x 6" 304 SS	4	
4	12FW-304SS	Flat washers, 1/2" 304 SS	8	
5	12HN-304SS	Hex nut, 1/2"-13, 304 SS	8	
6	12LW-304SS	Lock washer, 1/2", 304 SS	4	
7	516-1HHB-304SS	Bolt, hex head, 5/16"-18 x 1", 304 Stainless Steel	8	5
8	516FW-304SS	Washer, flat, 5/16", 304 Stainless Steel	16	9
9	516HN-304SS	Nut, hex, 5/16"-18, 304 Stainless Steel	8	5
10	516LW-304SS	Washer, lock, 5/16", 304 Stainless Steel	8	5
11	FB-304SS	Foot bracket/Base Bracket, 304 Stainless Steel		2
12	RB-304SS	Retaining/Inspection bar, 304 Stainless Steel		1
13	SA4412-304SS	Stiffening Angle, 1"x 2" x Cover Width (44 1/2"), 12ga 304SS	2	



Section A-A

Cover & Eyebolt not shown for clarity

SPECIFICATIONS

ASSEMBLY NO.	BELT WIDTH	"A"	"B"	"C"	WT in LB
CHFG18GA40	18"	16-1/4"	19-1/4"	27"	33
CHFG20GA40	20"	17-1/4"	20"	29"	34
CHFG24GA40	24"	19-1/4"	21-7/8"	33"	37
CHFG30GA40	30"	22-1/4"	24"	39"	40
CHFG36GA40	36"	25-1/4"	26-1/8"	45"	44
CHFG42GA40	42"	28-1/4"	28-1/4"	51"	48
CHFG48GA40	48"	31-1/4"	30-3/8"	57"	51
CHFG54GA40	54"	34-1/4"	32-1/2"	63"	55
CHFG60GA40	60"	37-1/4"	34-5/8"	69"	59
CHFG72GA40	72"	43-1/4"	39"	81"	63
CHFG84GA40	84"	49-1/4"	43"	93"	67

** 6" is standard tangent, other available upon request.

Material:

Standard CHFG covers are Fiberglass, .090" thickness, white.
Standard Bands are 12 ga 304 Stainless Steel.
Molded Fiberglass Bands, 1/4" nominal thickness, are available as an option.

DESIGN NOTE

Standard CHFG Series Covers are designed for conveyor frames with outside dimensions of belt width +12".
Eye bolts may hit conveyor structure when top chords are "T" or "W" structural shapes. This should be verified before ordering.
Special brackets are available for these circumstances.



Belt Conveyor Cover Projects

SKE Industries has helped many companies build their own conveyor system. Our conveyor covers has been used in many projects. We not only use our covers ourself but also provide our covers to other engineering comapanies. We can provide **FULL COVER, 3/4 COVER, 1/2 COVER, FULL COVER WITH WINDOW**. If you need any cover solutions, you can contact us directy via email (info@skecon.com).



